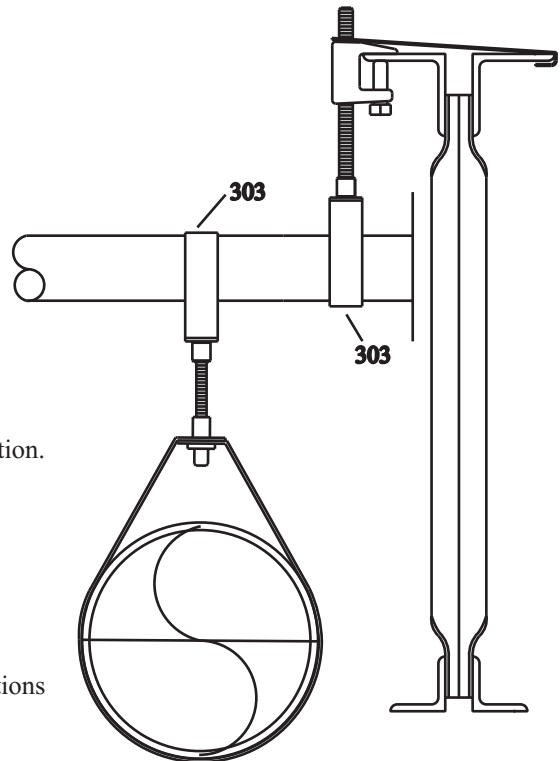




P.O. Box 3365 South El Monte, CA 91733 626.444.0541 Fax 626.444.3887 www.Afcon.org

303

TRAPEZE PIPE HANGER




SIZE - 3/8" Rod - 1 1/2" and 2" Trapeze Pipe Size
1/2" Rod - 2" thru 4" Trapeze Pipe Size.

MATERIAL - Carbon Steel, Mil. Galvanized to G-90 specification.

FINISH - Mil. Galvanized.

LISTING/APPROVAL -

 **203-EX 2551**

OSHPD OPA-0601 See Website.

Conforms to Federal Specification WW-H-171E type 10, and
Manufacturers Standardization Society SP-69, type 10.

MAXIMUM TEMPERATURE - 650° F.

FUNCTION - Heavy duty ring hanger used for trapeze installations
and severe duty hanger assemblies.

INSTALLATION - Per NFPA 13, 13R and 13D.

FEATURES

- * Formed to match trapeze pipe diameter which prevents elongation.
- * Listed to support the largest pipe size per rod diameter
3/8" rod = 4" hanger load rating.
1/2" rod = 8" hanger load rating.

ORDERING - Part #, rod size and pipe size.

