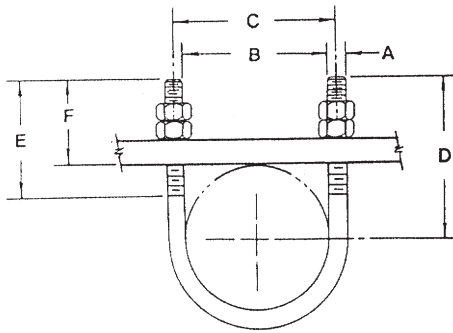




P.O. Box 3365 South El Monte, CA 91733 626.444.0541 Fax 626.444.3887 www.Afcon.org

240

U-BOLT STANDARD



PIPE SIZE	ROD SIZE						MAX REC. LOADS LBS.* FOR SERVICE TEMPS.	
	A	B	C	D	E	F		
1/2	5/16	15/16	1 3/16	2 3/4	2 1/8	2 5/16	485	435
3/4	5/16	1 1/8	1 3/8	2 3/4	2 1/8	2 7/32	485	435
1	5/16	1 3/8	1 5/8	2 3/4	2 1/8	2 3/32	485	435
1 1/4	3/8	1 11/16	2 1/16	2 7/8	2 1/8	2 1/32	1220	1090
1 1/2	3/8	2	2 3/8	3	2 1/2	2 1/16	1220	1090
2	3/8	2 7/16	2 13/16	3 1/4	2 1/2	2 1/16	1220	1090
2 1/2	1/2	2 15/16	3 7/16	3 3/4	3	2 5/16	2260	2020
3	1/2	3 9/16	4 1/6	4	3	2 1/4	2260	2020
3 1/2	1/2	4 1/16	4 9/16	4 1/4	3	2 1/4	2260	2020
4	1/2	4 9/16	5 1/16	4 1/2	3	2 1/4	2260	2020
5	1/2	5 5/8	6 1/8	5	3	2 7/32	2260	2020
6	5/8	6 3/4	7 3/8	6 1/8	3 3/4	2 13/16	3620	3230
8	5/8	8 3/4	9 3/8	7 1/8	3 3/4	2 13/16	3620	3230
10	3/4	10 7/8	11 5/8	8 3/8	4	3	5420	4830
12	7/8	12 7/8	13 3/4	9 5/8	4 1/4	3 1/4	7540	6730
14	7/8	14 1/8	15	10 1/4	4 1/4	3 1/4	7540	6730
16	7/8	16 1/8	17	11 1/4	4 1/4	3 1/4	7540	6730
18	1	18 1/8	19 1/8	12 5/8	4 3/4	3 5/8	9920	8850
20	1	20 1/8	21 1/8	13 5/8	4 3/4	3 5/8	9920	8850
24	1	24 1/8	25 1/8	15 5/8	4 3/4	3 5/8	9920	8850
30	1	30 1/8	31 1/8	18 5/8	4 3/4	3 5/8	9920	8850
36	1	36 1/8	37 1/8	21 5/8	4 3/4	3 5/8	9920	8850

*With minimum safety factor of 5

SIZE - 1/2 thru 36 inch pipe.

MATERIAL - Carbon Steel.

FINISH - Plain, E.G., H.D.G., and S.S.

LISTING - Conforms to Federal Specification WW-H-171E, type 24, and Manufacturers Standardization Society SP-69, type 24.

FUNCTION - Recommended for support, anchor or guide of heavy loads; often employed in power and process plant service.

ORDERING - Part #, rod size by pipe size. U-Bolt can be furnished with longer tangents D or with longer threads E if so required.

NOTE: When furnished hot-dip galvanized, oversize hex nuts must be used.

Maximum Temperature: 750°F.

