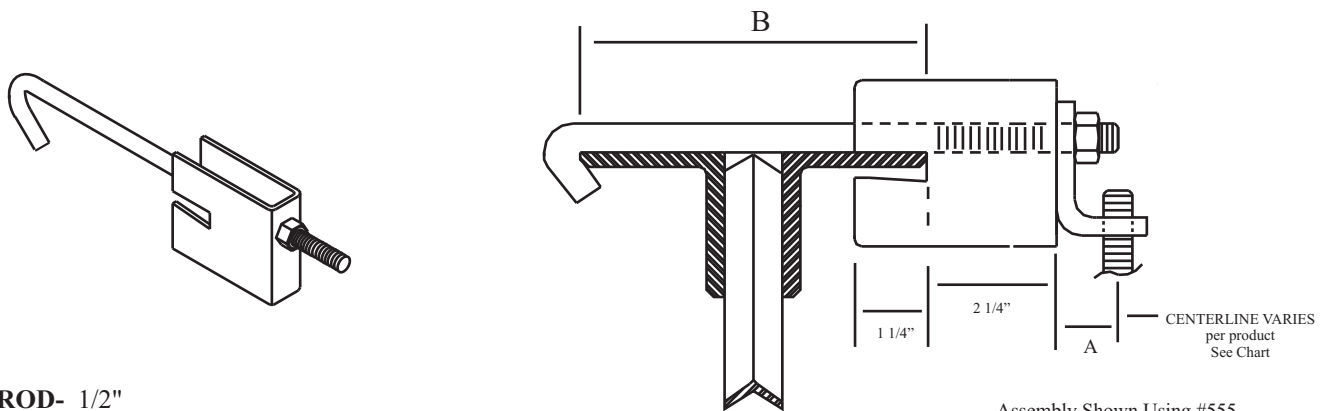




P.O. Box 3365 South El Monte, CA 91733 626.444.0541 Fax 626.444.3887 www.Afcon.org

142

TRUSS BRACKET



Assembly Shown Using #555

SIZE - ROD- 1/2"
SYSTEM PIPE: 8" max.
MATERIAL - Carbon steel.
FINISH - Plain and E.G.
LISTINGS -



PATENT - No. 6,898,905

FUNCTION - For use on top chord of steel web joist structural members constructed with angle iron from 3/16" thru 3/8" thick.

Can also be used on H or I beam, consult factory.

INSTALLATION -Per these instructions.

- Including NFPA 13 and the truss manufacturers approval.
- Install across the top of joist engaging both chord elements.
- Install within 6" of the panel point.
- Adjustable to fit joist "B" dimension of 5" thru 7"- if different Consult Factory.
- Use in combination with *AFCON* hanger attachments per chart.

ASSEMBLY/ATTACHMENT - See drawing.

- Locate 1/2" formed bolt on top chord, insert bracket over threaded bolt end, next insert hanger assembly followed by 1/2" nut. Torque nut to 125 lb-in.
- In the absence of a torque wrench engage nut finger tight then additionally tighten 1/2 turn.

Only tighten nut with hand tools.
NEVER INSTALL NUT WITH IMPACT/DRILL DRIVER.

FEATURES

- * Offsets hanger to facilitate clearance.
- * To space parallel piping away from web elements.
- * Possible alternative to a trapeze.

ORDERING - Part #, finish.

Part #	Dim. A Offset	#142 Offset	Total Offset
535	1/4	2 1/4	2 1/2
551	3/4	2 1/4	3
552	1 1/16	2 1/4	3 3/16
555	1 1/8	2 1/4	3 3/8
680	1/4	2 1/4	2 1/2

