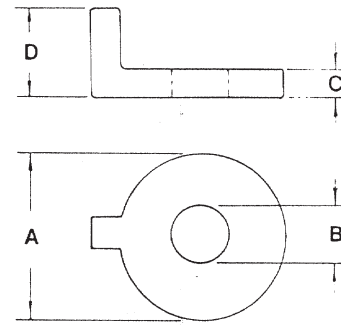
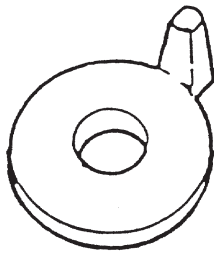




P.O. Box 3365 South El Monte, CA 91733 626.444.0541 Fax 626.444.3887 www.Afcon.org

## 851

### SOCKET WASHER



| ROD SIZE | A       | B      | C      | D     | WEIGHT/C (APPROX) |
|----------|---------|--------|--------|-------|-------------------|
| 3/4      | 2 13/16 | 7/8    | 5/8    | 1 5/8 | 95                |
| 1        | 3 13/16 | 1 5/16 | 11 1/6 | 3 1/4 | 253               |
| 1 1/4    | 3 13/16 | 1 3/8  | 11/16  | 3 1/4 | 248               |
| 1 3/8    | 3 1/2   | 1 1/2  | 3/4    | 3 1/4 | 245               |
| 1 1/2    | 3 1/2   | 1 5/8  | 3/4    | 3 1/4 | 240               |
| 1 3/4    | 4       | 1 7/8  | 1      | 2 1/2 | 390               |

**SIZE** - 3/4 thru 1 3/4 inch rod.

**MATERIAL** - Cast Iron or Carbon Steel.

**FINISH** - Plain, E.G. and H.D.G.

**FUNCTION** - To be used with part #850 when tie rods are required. The lug bears against the clamp bolt to prevent the washer and tie rod from slipping off the clamp.

**ORDERING** - Part #, rod size and finish.

